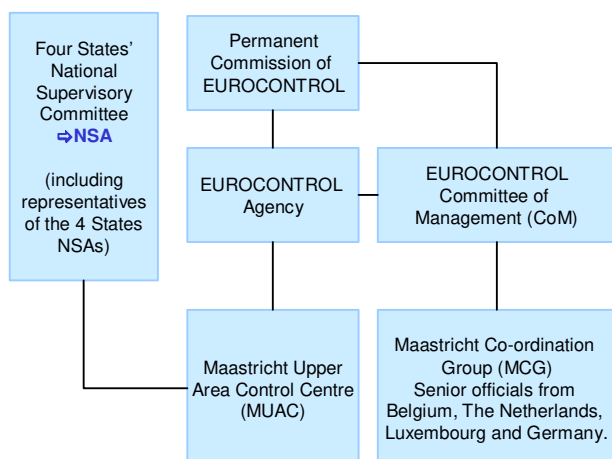


### Institutional arrangements and links (2017)



### Status (2017)

- EUROCONTROL: International Organisation established under the EUROCONTROL Convention of 13.12.1960 and amended on 12.2.1981. At the request of the Benelux States and Germany, MUAC is operated as a EUROCONTROL Agency's Service according to the Maastricht Agreements of 25.11.1986

#### **National Supervisory Authority (NSA):**

Four States' National Supervisory Committee

#### **Body responsible for:**

##### Safety Regulation

Maastricht Agreements Art. 1.2: each of the 4 States retains its competence and obligations in respect of regulations

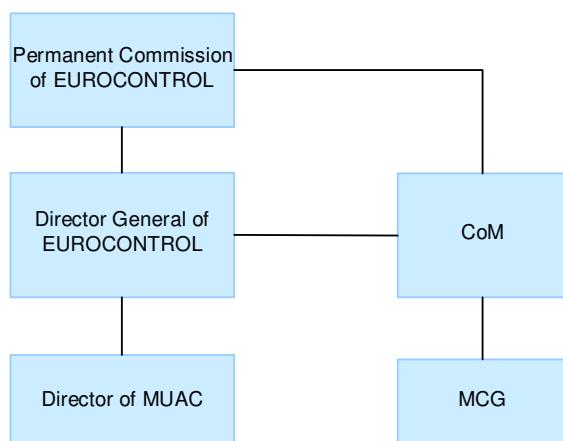
##### Airspace Regulation

The MCG determines a common position for the 4 States in all matters relating to the operation of ATS by MUAC concerning, inter alia, airspace organisation and sectorisation

##### Economic Regulation

Financial arrangements for the exploitation of MUAC are adopted by the Committee of Management. EUROCONTROL DG seeks approval of the budget, which contains a special budgetary Annex for MUAC, with the Permanent Commission

### Corporate governance structure (2017)



### MUAC (2017)

#### *DIRECTOR GENERAL OF EUROCONTROL:*

Frank Brenner

#### *DIRECTOR OF MUAC:*

Jac Jansen

### Scope of services (2015)

<input checked="" type="checkbox"/> GAT	<input checked="" type="checkbox"/> Upper Airspace	<input type="checkbox"/> Oceanic ANS
<input type="checkbox"/> OAT	<input type="checkbox"/> Lower Airspace	<input type="checkbox"/> MET

- Controls GAT in the upper airspace (>FL245) above Benelux and North-Western Germany
- A German ATC unit responsible for handling OAT above North-Western Germany and managed by the DFS is co-located at MUAC

### Operational ATS units (2015)

1 ACC (Maastricht)

### Key financial and operational figures (ACE 2015)

Gate-to-gate total revenues (M€)	
Gate-to-gate total costs (M€)	135
Gate-to-gate ATM/CNS provision costs (M€)	135
Gate-to-gate total ATM/CNS assets(M€)	63
Gate-to-gate ANS total capex (M€)	5
ATCOs in OPS	265
Gate-to-gate total staff (incl. MET staff*)	570
Total IFR flight-hours controlled by ANSP ('000)	601
IFR airport movements controlled by ANSP ('000)	n/appl
En-route sectors	20
Minutes of ATFM delays ('000)	585

\* if applicable

### Size (2015)

Size of controlled airspace: 260 000 km<sup>2</sup>

